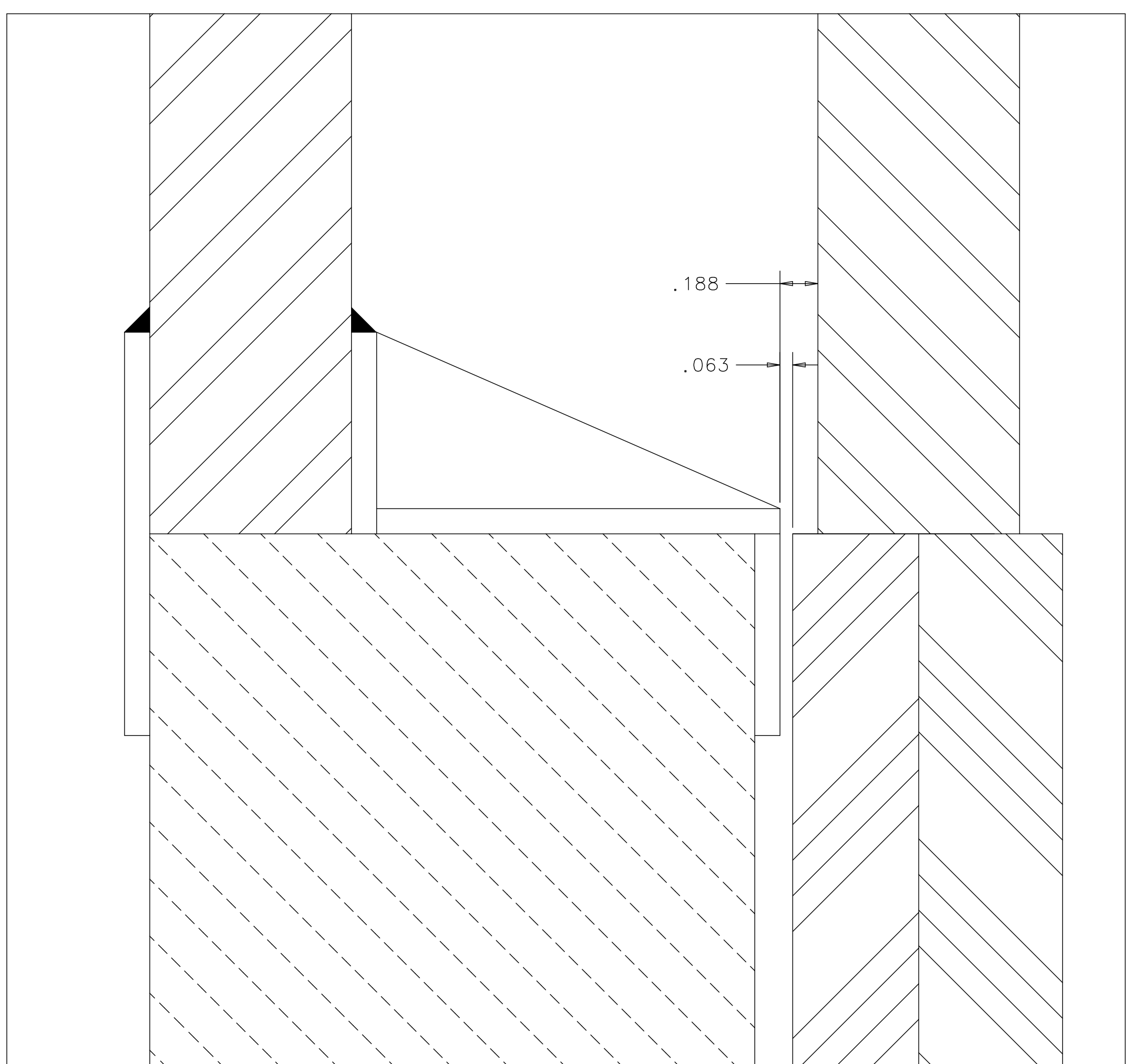
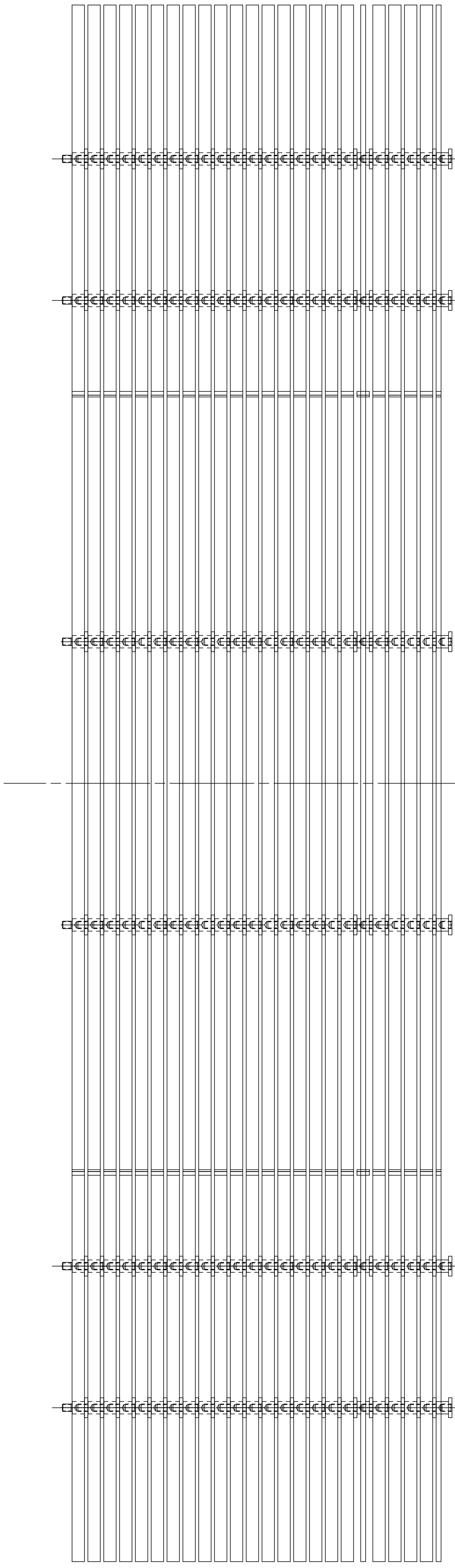
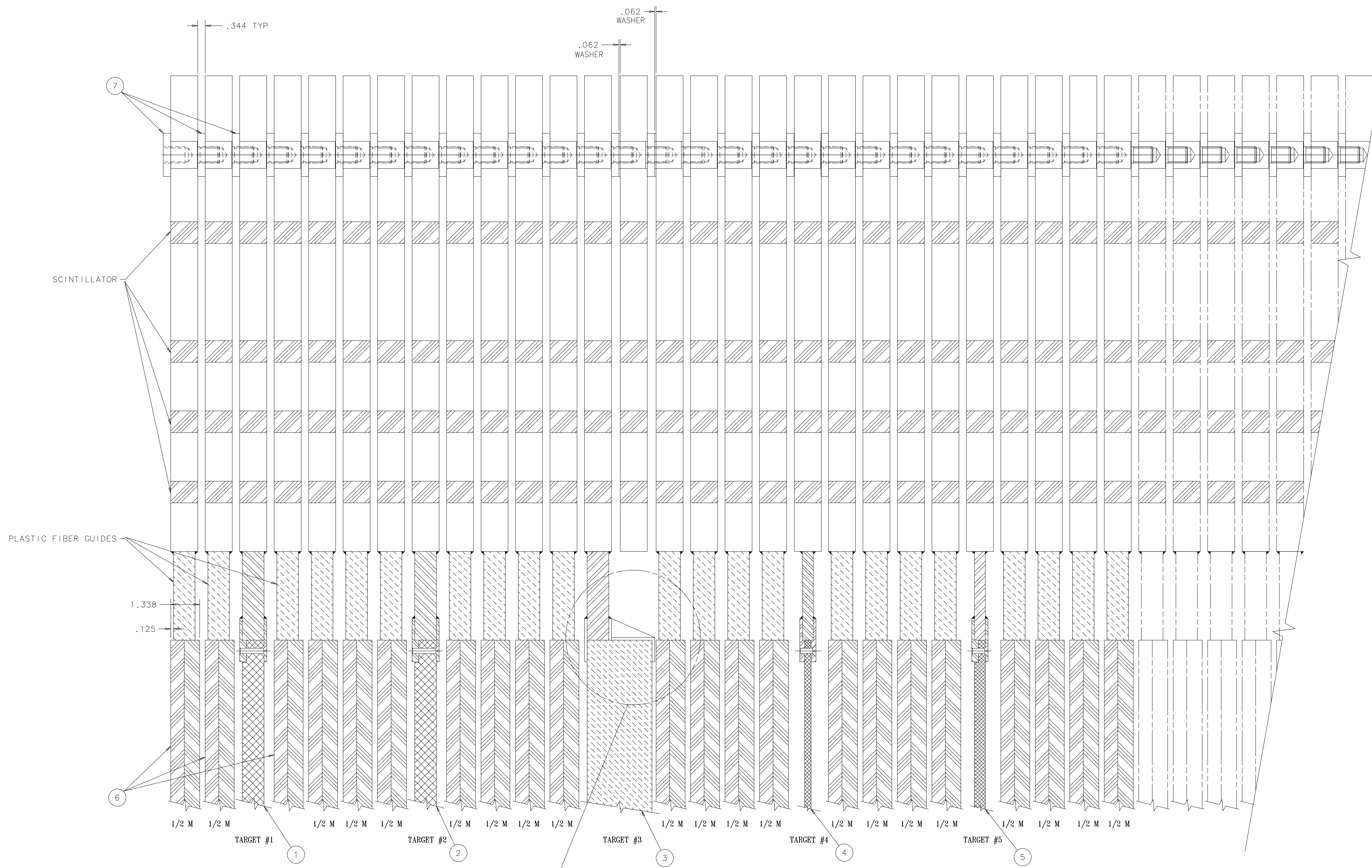


REV	DESCRIPTION	DRAWN	DATE
1		APPROVED	DATE



STEEL	
SCINTILLATOR	
PLASTIC	

ITEM	PART NO.	DESCRIPTION OR SIZE	QTY.
7	MC-435495	AXIAL BOLT	AS REQ'D
6	EXISTING	SCINTILLATOR ASSEMBLY	AS REQ'D
5	ME-435810	TARGET ASSEMBLY #5	1
4	ME-435859	TARGET ASSEMBLY #4	1
3	ME-435858	TARGET ASSEMBLY #3	1
2	ME-435857	TARGET ASSEMBLY #2	1
1	ME-435856	TARGET ASSEMBLY #1	1

PARTS LIST			
UNLESS OTHERWISE SPECIFIED	ORIGINATOR	J. KILMER	06-JUL-2006
.X	.XX	ANGLES	DRAWN
±	±	±	CHECKED
APPROVED			USED ON
MATERIAL			SEE PARTS LIST ABOVE

FERMI NATIONAL ACCELERATOR LABORATORY
 UNITED STATES DEPARTMENT OF ENERGY
MINERVA-MECHANICAL DETECTOR TARGET ASSEMBLY LAYOUT

SCALE	DRAWING NUMBER	SHEET	REV
NOTED	3938.300-ME-435902	1 OF 1	

CREATED WITH: Ideas12NXSeries | GROUP: PPD/MECHANICAL DEPARTMENT