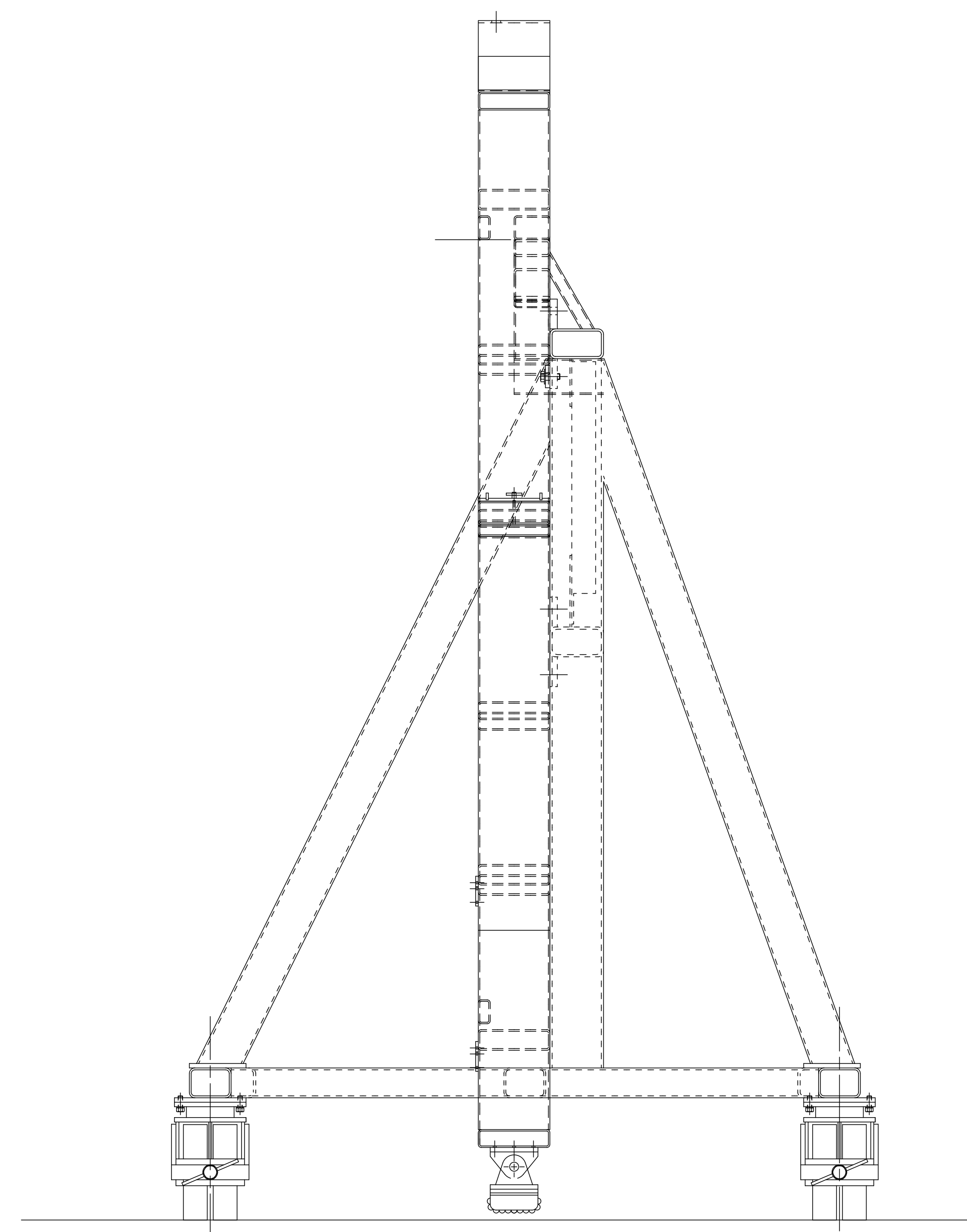
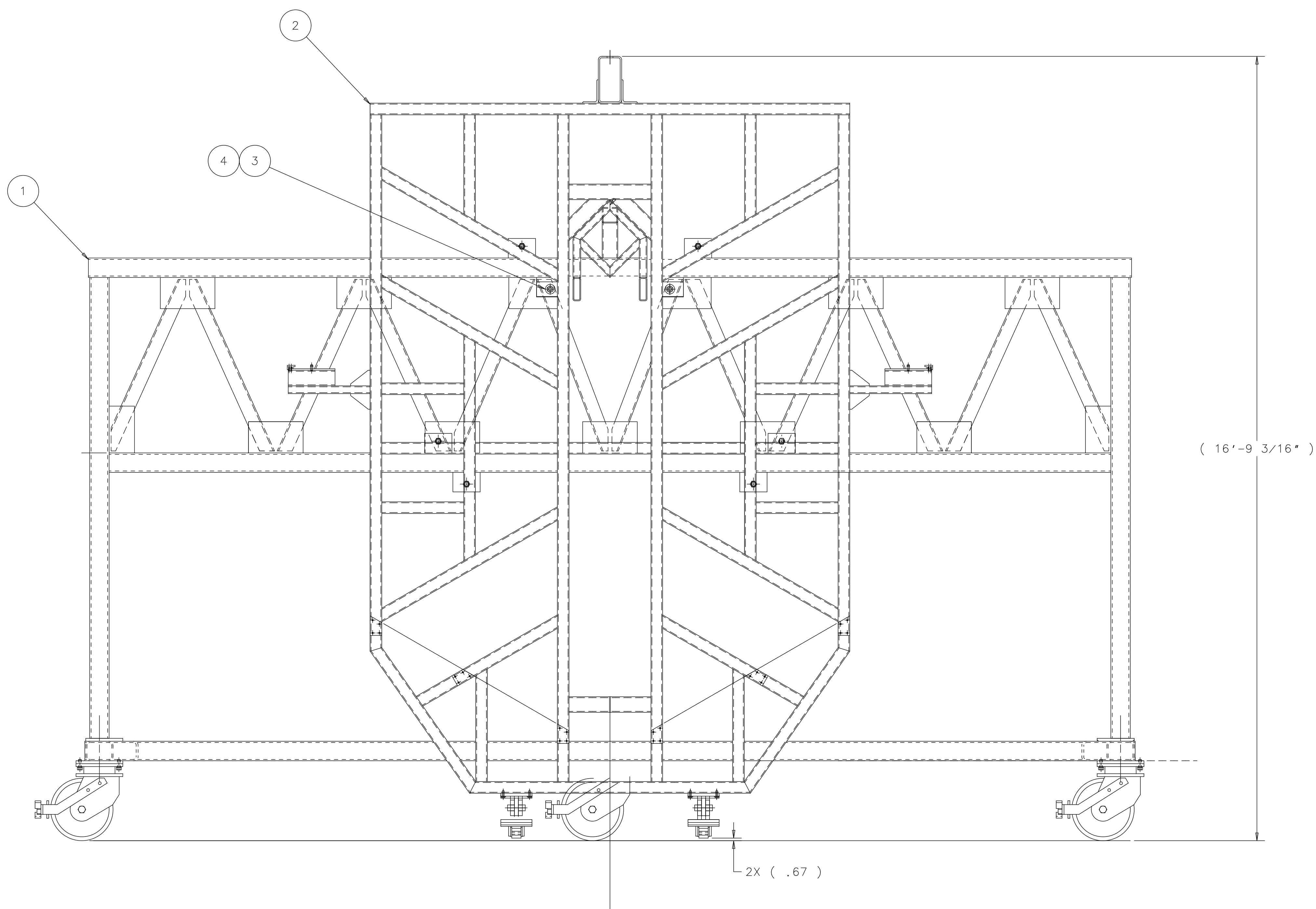
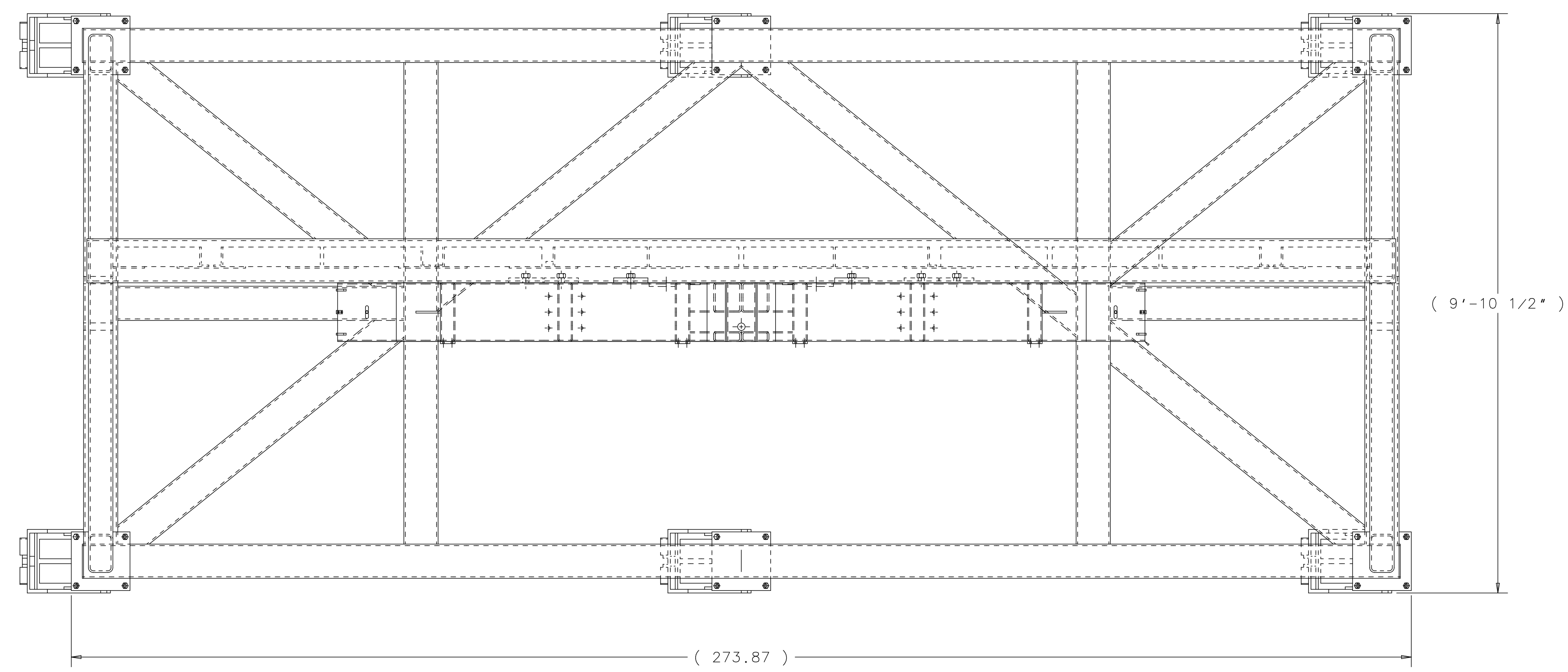



REV	DESCRIPTION	1 DRAWN APPROVED	DATE DATE
-----	-------------	------------------------	--------------



ITEM	PART NO.	DESCRIPTION OR SIZE	QTY.
4	COML	FLAT WASHER - 1" BOLT SIZE	2
3	COML	1"-8 UNC-2A HEX BOLT X 2 1/2 LG.-STEEL	2
2	ME-435758	STRONGBACK WELDMENT	1
1	MD-435763	TRANS CART TRUSS FRAME MOD	1

PARTS LIST			
UNLESS OTHERWISE SPECIFIED	ORIGINATOR	J. KILMER	25-SEP-2006
.XX	.XXX	ANGLES	DRAWN
±	±	±	CHECKED
APPROVED		USED ON	
MATERIAL		SEE PARTS LIST ABOVE	


FERMI NATIONAL ACCELERATOR LABORATORY
 UNITED STATES DEPARTMENT OF ENERGY
MINERVA - MECHANICAL DETECTORS
CART & STRONGBACK ASSY

SCALE	DRAWING NUMBER	SHEET	REV
1:8	3938.330-ME-444107	1 OF 1	

CREATED WITH: Ideas12NXSeries GROUP: PPD/MECHANICAL DEPARTMENT