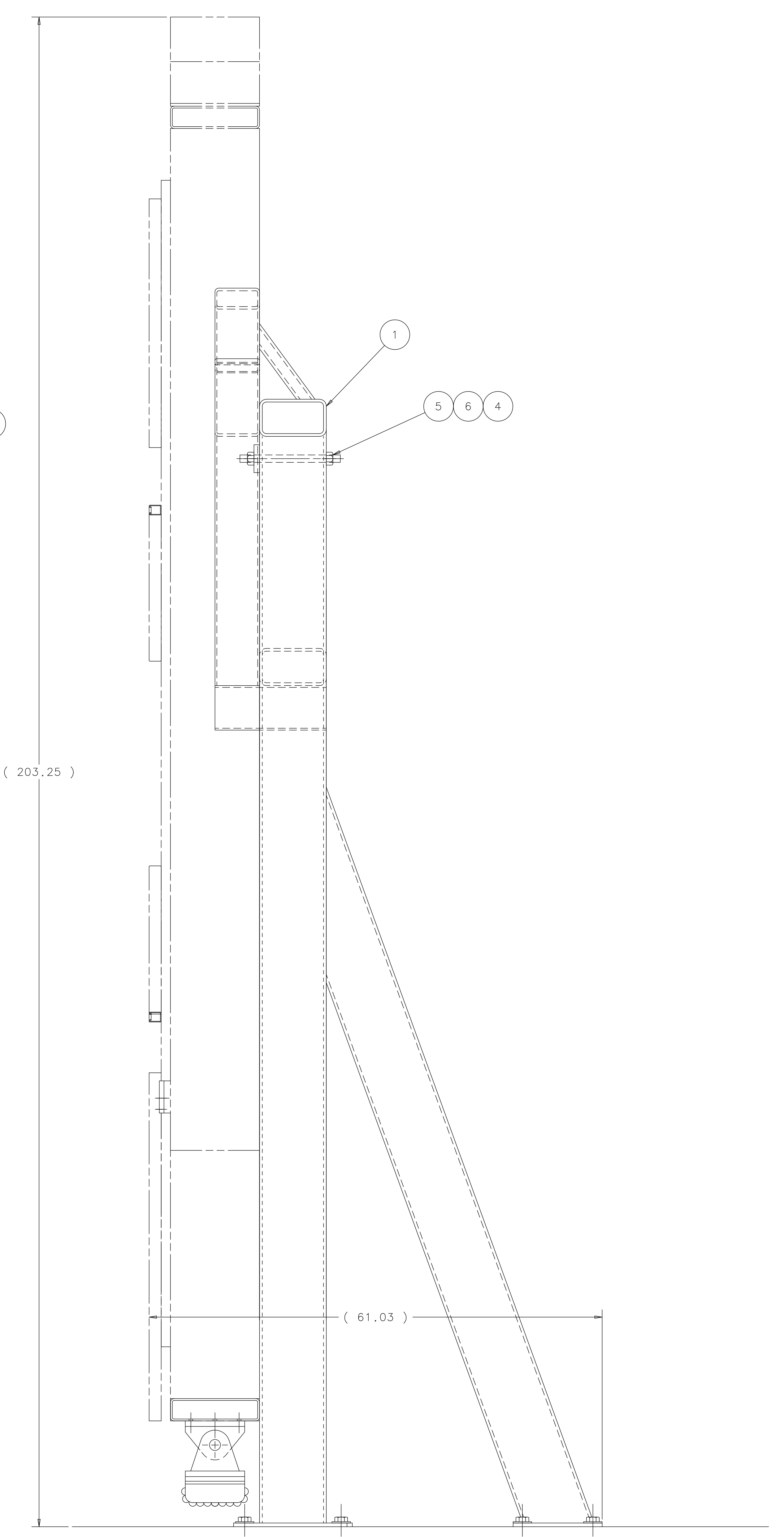
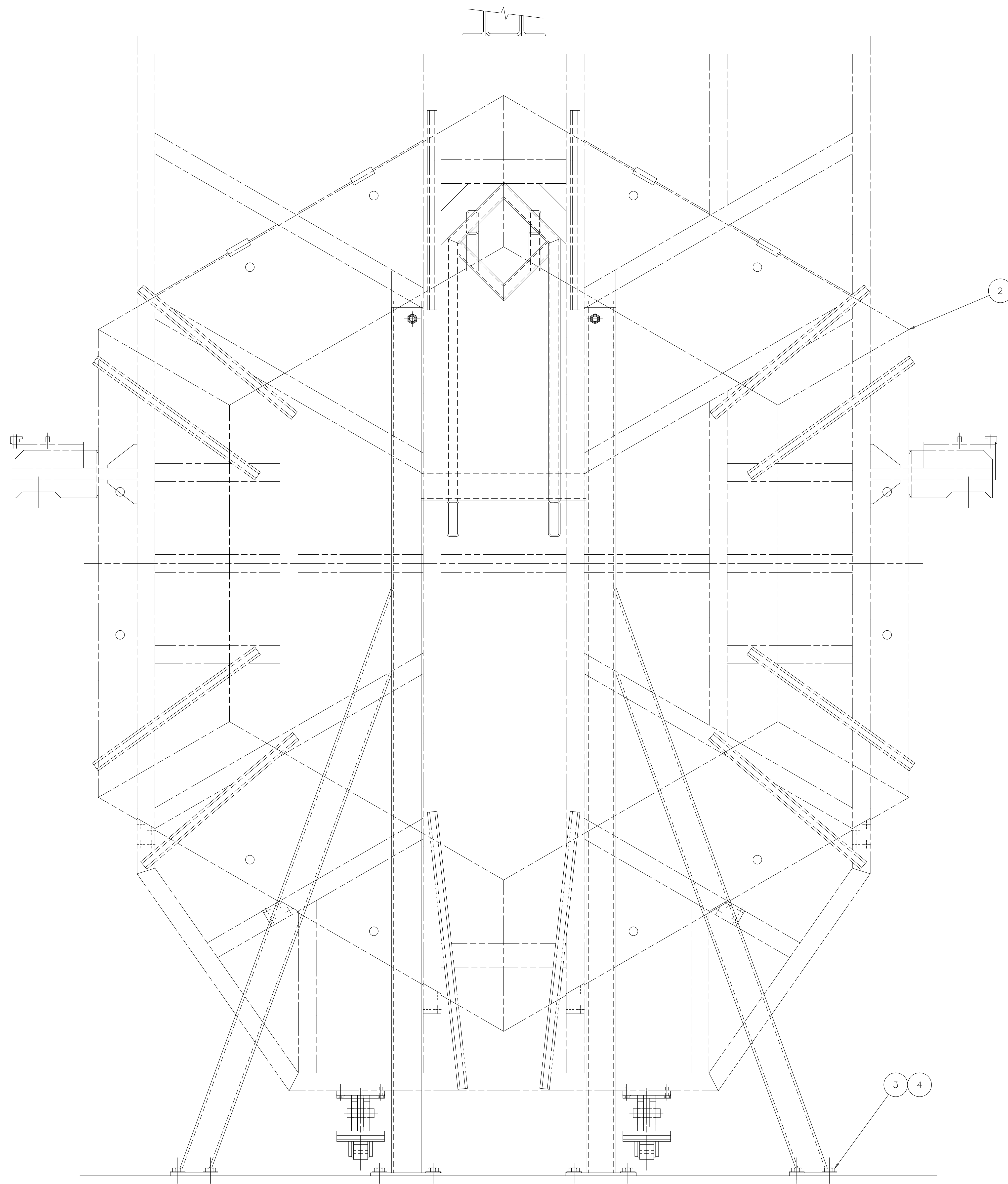
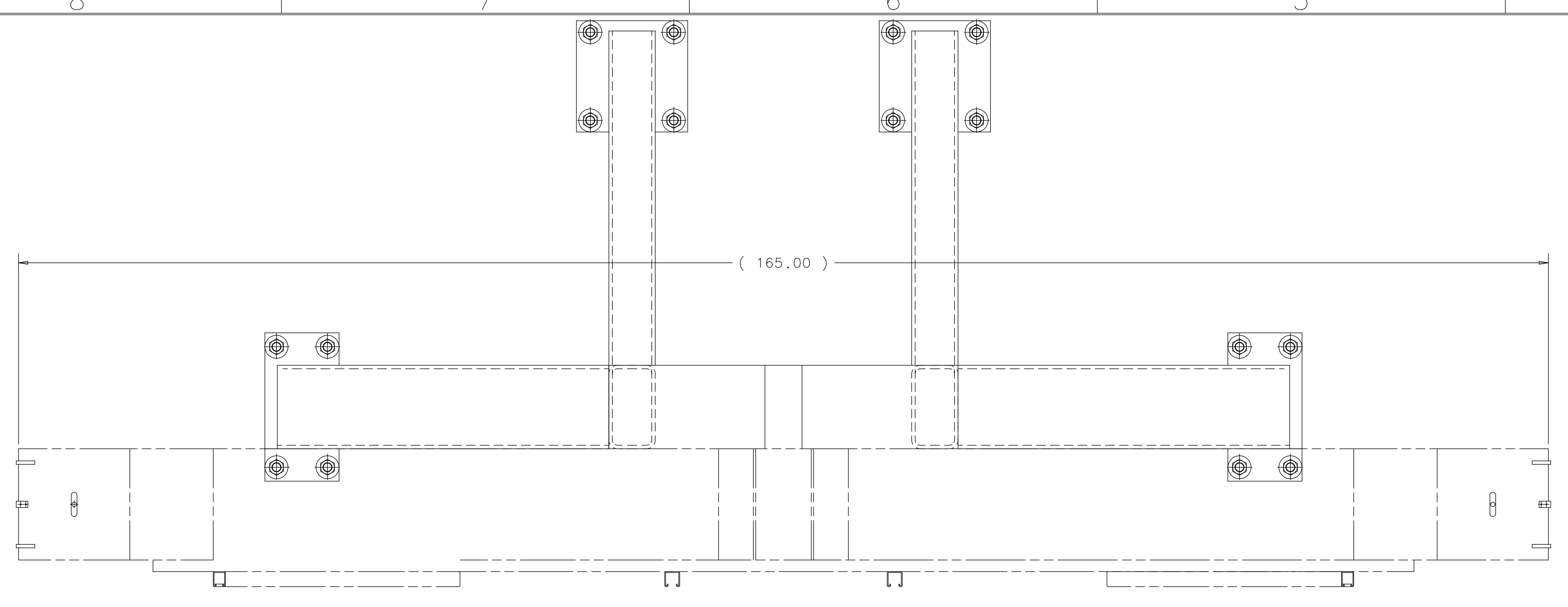


REV	DESCRIPTION	1 DRAWN	DATE
		APPROVED	DATE



ITEM	PART NO.	DESCRIPTION OR SIZE	QTY.
6	COML	HEX NUT 1*-8 UNC-2B STEEL GRADE 8	4
5	COML	1*-8 UNC-2A THREADED ROD X 13.50 LG.-STEEL GRADE 8	2
4	COML	FLAT WASHER - 1" BOLT SIZE STEEL GRADE 8	28
3	COML	1*-8 UNC-2A HEX BOLT X 1 1/2 LG.-STEEL	24
2	ME-444081	STRONGBACK LAYOUT ASSEMBLY	1
1	ME-444104	STRONGBACK FLOOR SUPPORT WELD	1

PARTS LIST			
UNLESS OTHERWISE SPECIFIED	ORIGINATOR	J. KILMER	20-SEP-2006
.XX	ANGLES	G. SMITH	20-SEP-2006
± ---	CHECKED	D. FRIEND	19-OCT-2006
	APPROVED	J. KILMER	19-OCT-2006
USED ON			
MATERIAL			
SEE PARTS LIST ABOVE			

FERMI NATIONAL ACCELERATOR LABORATORY
 UNITED STATES DEPARTMENT OF ENERGY
MINERVA - MECHANICAL DETECTORS
STRONGBACK FLOOR SUPPORT ASSY

SCALE	DRAWING NUMBER	SHEET	REV
1:8	3938.330-ME-444100	1 OF 1	

CREATED WITH: Ideas12NXSeries GROUP: PPD/MECHANICAL DEPARTMENT