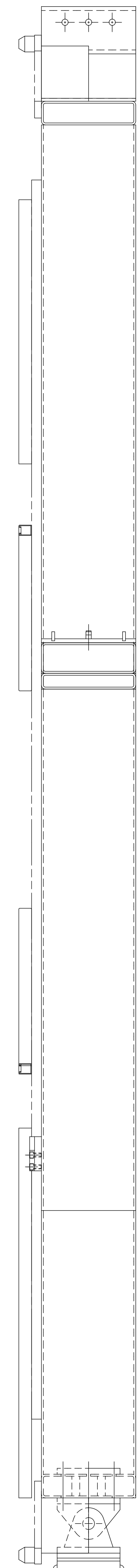
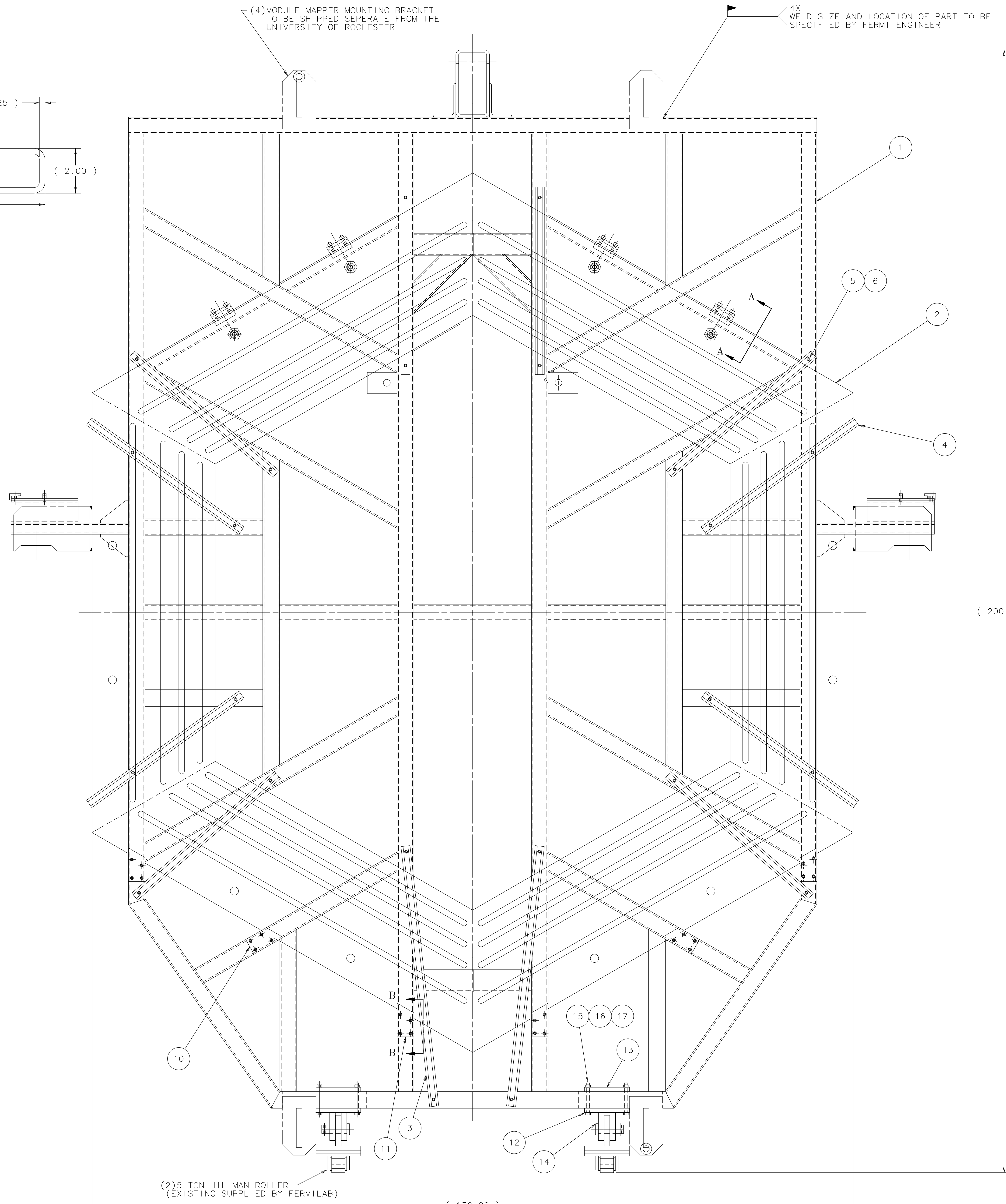
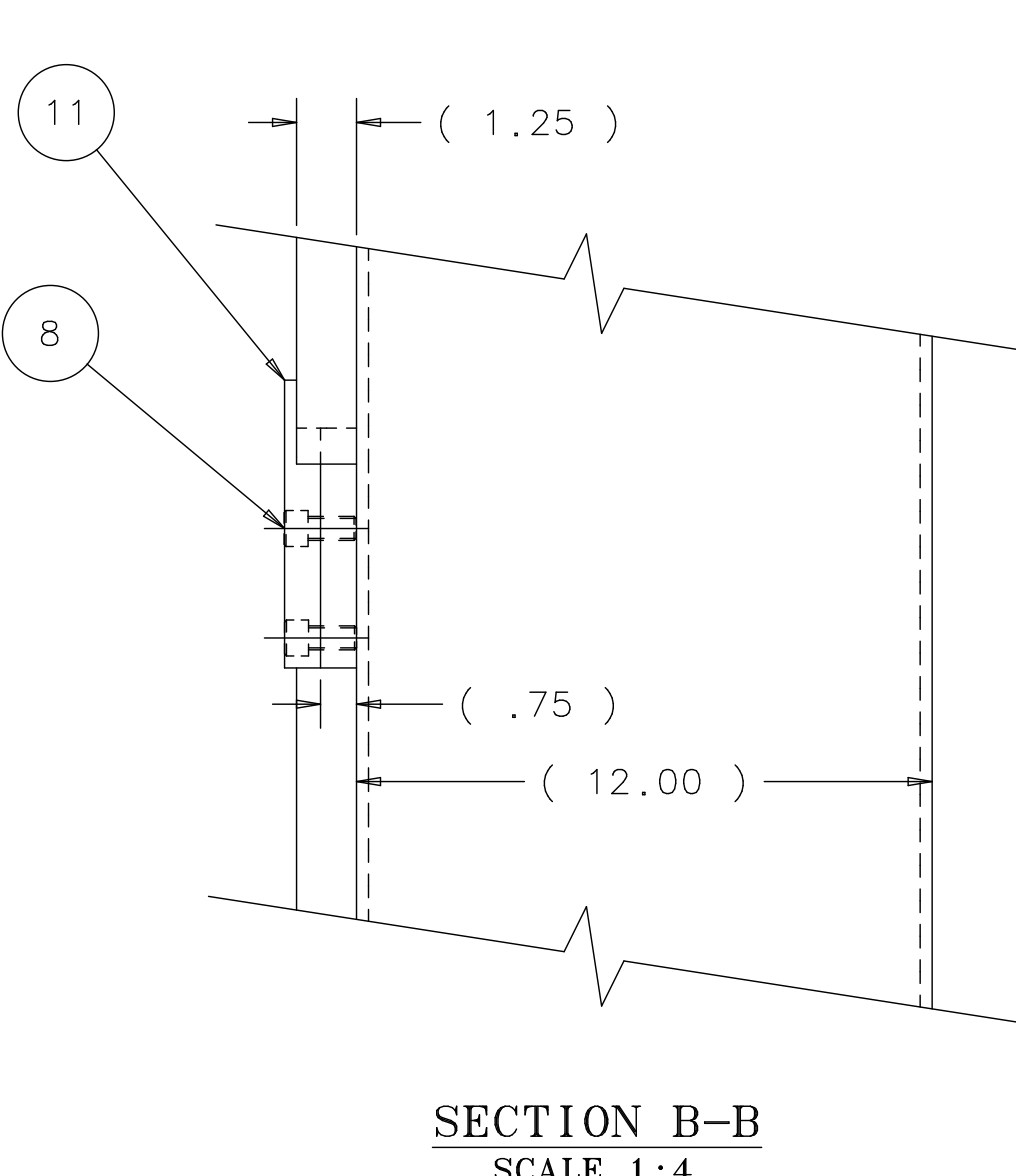
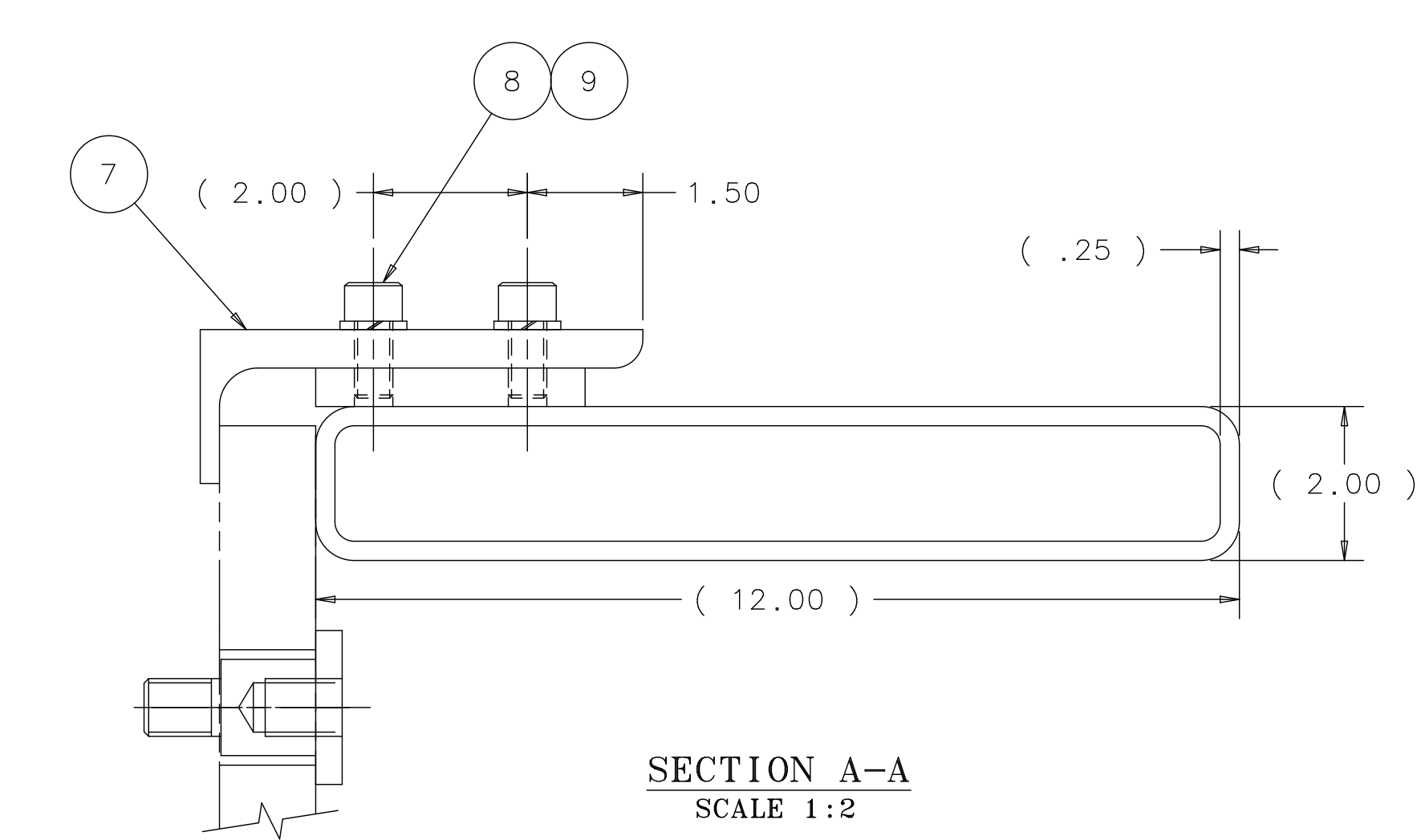
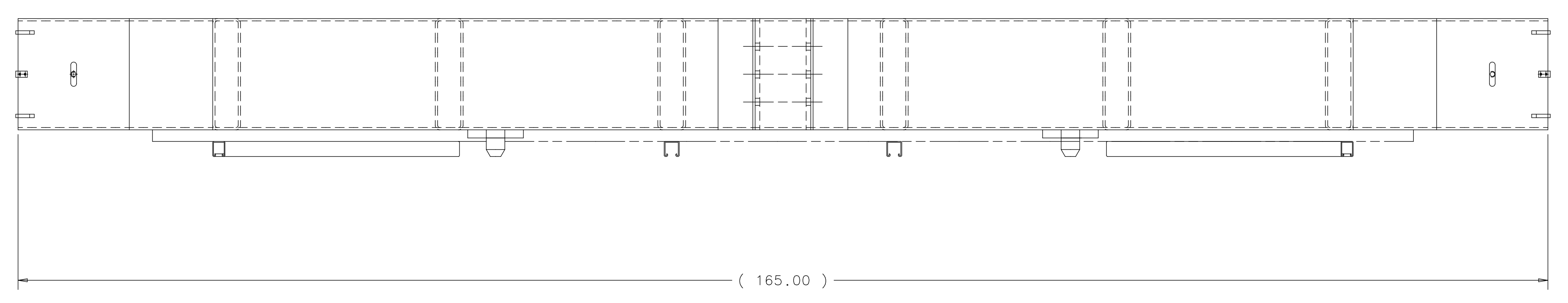


REV	DESCRIPTION	DRAWN APPROVED	DATE
1			



APPROX. WEIGHT = 6,200 LBS

ITEM	PART NO.	DESCRIPTION OR SIZE	QTY.
17	COML	FLAT WASHER -1/2" SCREW SIZE PLAIN STEEL	12
16	COML	1/2-13 UNC-2B HEX NUT-STEEL GRADE 8	12
15	COML	1/2-13 UNC-2B HEX HD. SCREW X 6.00 LG.-STEEL GRADE 8	12
14	9213_300-MB 584126	PIN ROLLER PIVOT	2
13	MB-444144	CLAMP PLATE	2
12	9213_300-MC 584127	HILLMAN ROLLER PIVOT WELDMENT	2
11	MC-444127	STRONGBACK LOWER CLAMP PLATE R.H.	3
10	MC-444125	STRONGBACK LOWER CLAMP PLATE	3
9	COML	LOCK WASHER-1/2" SCREW SIZE PLAIN STEEL	16
8	COML	SOCKET HD. SCREW-STEEL GRADE 8 1/2-13 UNC-2A X 1.00" LG.	40
7	MB-444124	STRONGBACK CLAMP BRACKET	4
6	COML	LOCK WASHER-3/8" SCREW SIZE PLAIN STEEL	24
5	COML	SOCKET HD. SCREW-STEEL GRADE 8 3/8-16 UNC-2A X 1.00" LG.	24
4	COML	UNISTRUT P1000 - 33.50 LG.	10
3	COML	UNISTRUT P1000 - 46.75 LG.	2
2	MC-435704	PLAIN AND SUPPORT EAR WELDMENT	1
1	ME-435758	STRONGBACK WELDMENT	1

**PARTS LIST**

UNLESS OTHERWISE SPECIFIED	ORIGINATOR	J. KILMER	11-SEP-2006
.XX	.XXX	ANGLES	G. SMITH 11-SEP-2006
±	±	CHECKED	D. FRIEND 19-OCT-2006
		APPROVED	J. KILMER 19-OCT-2006

1. BREAK ALL SHARP EDGES TO MAX.  
2. DO NOT SCALE DRAWING.  
3. DIMENSIONS BASED UPON CMC 114-040-194  
4. MAX. ALL MACH. SURFACES  
5. DRAWING UNITS: U.S. INCH

USED ON: MATERIAL: SEE PARTS LIST ABOVE

**FERMI NATIONAL ACCELERATOR LABORATORY**  
UNITED STATES DEPARTMENT OF ENERGY

**MINERVA - MECHANICAL DETECTORS STRONGBACK LAYOUT ASSEMBLY**

SCALE 1:8	DRAWING NUMBER 3938.330-ME-444081	SHEET 1 OF 1	REV
-----------	-----------------------------------	--------------	-----

CREATED WITH: Ideas12NXSeries GROUP: PPD/MECHANICAL DEPARTMENT